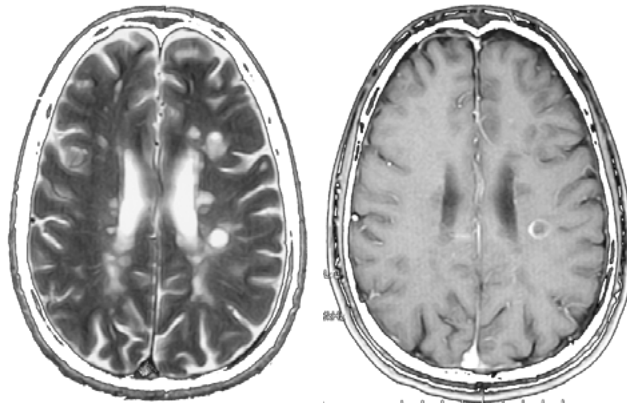


# MS PHENOTYPES

## IMPLICATIONS FOR PRACTICE



**SAVE THE DATE**  
**AUGUST 7, 2019**

**7-8 PM EST**

---

The MS Clinical subtypes or phenotype descriptions were originally developed in 1996 and updated in 2012 based upon improved knowledge of MS pathology and clinical course. They have been incorporated into clinical practice, used for MS clinical trials and have been part of regulatory review and approval of MS DMTs. In March of 2019, MS disease course modifiers were added by the FDA to new MS drug labeling.

This presentation will explore the 2012 phenotype definitions and modifiers and discuss the practice implications of the new FDA labeling for MS drugs approved for relapsing forms of MS.

**PRESENTED BY**

**Fred Lublin, MD**

Corinne Goldsmith Dickinson Center for Multiple Sclerosis at Mount Sinai

Register online: <https://attendee.gotowebinar.com/register/9068407267640930829>